

Temp.-minimum Temp.-mittel Temp.-maximum langjähriges Mittel (1961-1990)

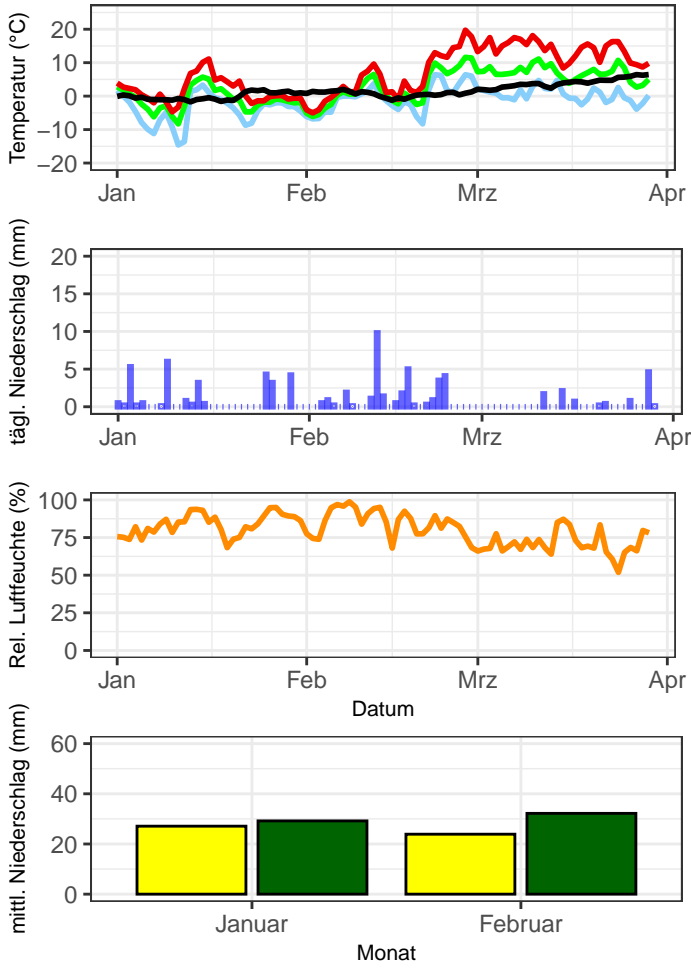
täglicher Niederschlag

Rel. Luftfeuchte (%)

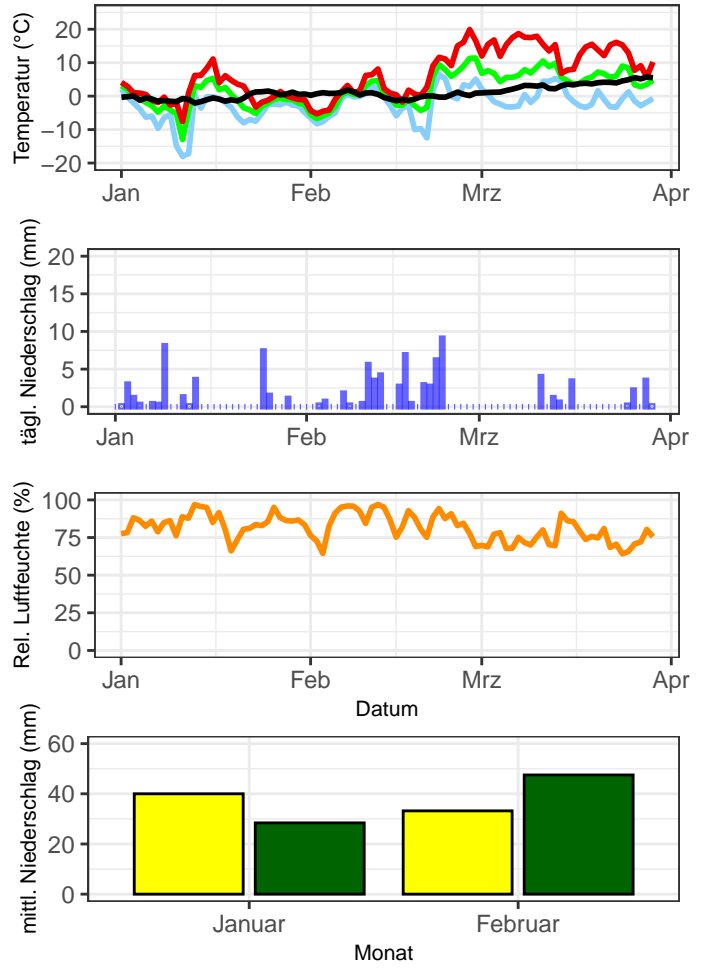
langjähriges Mittel 1961-1990

mittlerer Niederschlag 2026

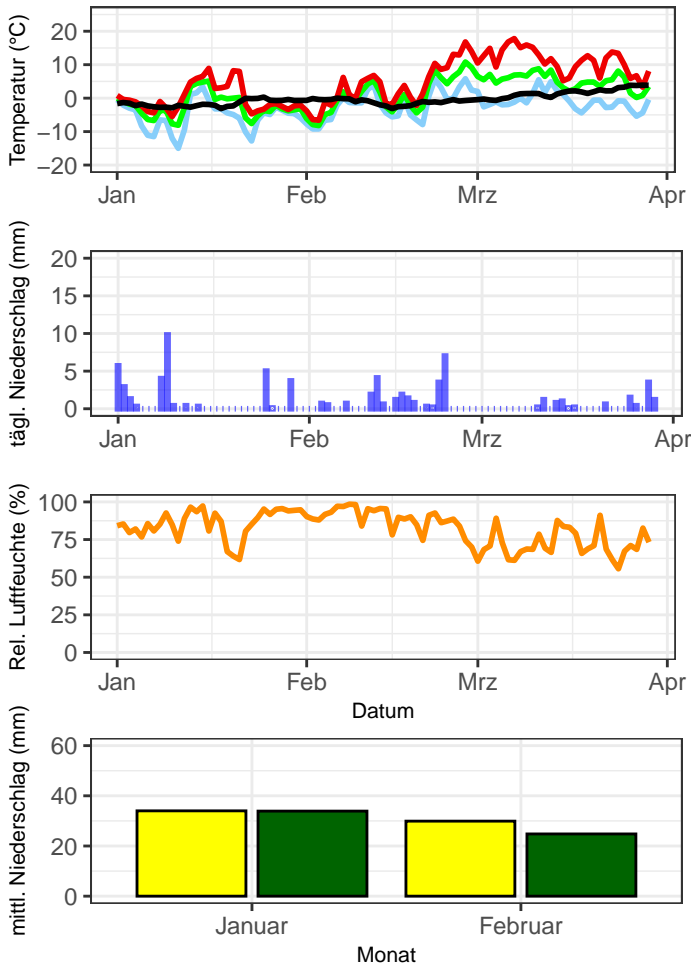
Bernburg, 2026, KW 1-13



Gardelegen, 2026, KW 1-13



Harzgerode, 2026, KW 1-13



Wittenberg, 2026, KW 1-13

